

Augusta Park Primary School Newsletter

TERM 2 WEEK 3

19 MAY 2017



Dates to Remember

Monday 29th May
Reconciliation Week

Monday 12th May
Queen's Birthday

Friday 9th June
2.30pm Assembly

Tuesday 20th June
Governing Council

Friday 30th June
2.30pm Assembly

Monday 3 July
NAIDOC week

From the Principal

Dear Families

Last week all our Year 3, 5 and 7 students participated in NAPLAN testing. I would like to congratulate all students on their efforts and the persistence they showed in having a go and not giving up. Well done!!



Smoking not permitted on or near school grounds

This week we held a Governing Council meeting where concerns were raised that people were smoking either on school grounds or on the footpath outside the school. We would like to remind families that smoking is not allowed on school grounds or ten metres from the school fence. This is part of the DECD Smoke Free Policy which applies to all people entering schools or are outside the perimeter of schools.



Keeping safe



Throughout this year we have had a number of break-ins, smashed windows, graffiti and vandalism at the school. Unfortunately these incidents do not seem to be decreasing and it is very disappointing that people are choosing to come to our school and damage our property. All these incidents have been reported to the police and they are following them up. We are asking for your support by:

- Being vigilant if you are on school grounds or going past the school during out of school hours and reporting any suspicious behaviour to the police immediately. Please call 131 444.
- Talking to your children about staying off school grounds to ensure their safety. If children are seen on school grounds without an adult they will be asked to leave. If they refuse to leave the police will be contacted.

I am hoping that if we all remain vigilant and work together then these incidents wont continue to occur.

Kind regards, Bec Mueller

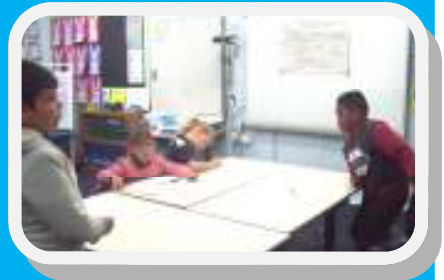
Nationally Consistent Collection of Data on School Students with Disability

We have been working on the annual Nationally Consistent Collection of Data on School Students with Disability ('the Collection').

The Collection is aimed at providing all Australian schools, education authorities and the community with a clear picture of the number of students with disability in schools and the adjustments they require to enable them to participate in education on the same basis as other students.

The data collection involves the collection of the following information:

- the number of students receiving adjustments to enable them to participate in education on the same basis as other students;
- the level of adjustment provided to students; and where known, the student's type of disability.



Under the Collection model the definition of disability is broad and includes learning difficulties, health and mental health conditions.

If your child is identified for inclusion in the Collection, the required information about your child will be included in this year's data collection.

Once the data has been collated, it will be de-identified before providing it to the Australian Government Department of Education. This ensures that students names are not linked to the information provided.

The data will be used by our school to inform and improve practice for students with disability and by the Department for Education and Child Development to inform state-wide reform initiatives. The Australian Government Department of Education will use the information collected to inform national policy development.

If you have any questions about the data collection please contact Leah Kelly on 8642 3599. Further information about the Collection can be found at: <http://www.education.gov.au/nationally-consistent-collection-data-school-students-disability>

Reminder—Morning supervision of children

We would like to remind all families that students are not permitted in the school yard until 8.35am each morning unless they have an adult with them at all times. This is because there is not a staff member on duty. We appreciate families' support in this matter to ensure the safety and wellbeing of all students. If your child travels on the bus to school a staff member will greet them and they will be supervised in the Library until 8.35am.

School Uniform/Hats Reminder

This is just a reminder that we have a compulsory school uniform. The school uniform consists of:

- Navy T-shirt with pale blue inserts or the reverse (pale blue T-shirt with navy inserts) with the school logo. *(Please note a plain pale blue or navy T-shirt is not considered part of the school uniform).*
- School Jumper with the school logo either hooded or with a baseball jacket style.
- Summer school dress of blue and white check.
- School hat (bucket or broad-brimmed).



Please remember that all students are required to wear a hat during both recess and lunch breaks. If your child does not have a hat to wear, then they will be required to spend their break/play time in the library or under the canteen area.

Growth Mindset

This year in Ms Roy's Year 6/7 class, students have been focusing on developing a Growth Mindset. Students understand that having a growth mindset helps them to keep trying even when their learning is hard.

Students were asked to focus on a successful person that inspires them. Through research students identified the challenges and failures they had faced and how they overcame the battles to become successful. From this students were able to demonstrate the importance of having a growth mindset and its connection to success.

Student Personal Reflections



Caelum and Zoe researched
Stephen Hawking.

"I believe having a growth mindset is important because it helps to keep positive even when things seem hard."

- Kynan Stewart

"I believe that it is important to have a growth mindset because it is extremely important to be happy and have a positive point of view of things, and when something is too hard you need to keep trying, even if you fail. Failing is the best thing when you are trying to accomplish something, because when you fail, you learn from your mistakes and that makes you better the next time you try."

- Zoe Smith

"I believe it's important to have a growth mindset because even when things in life are hard it helps keep a positive outlook for the future."

- Ciara Duckford



Ciara and Amelia researched
Eminem.



Aaliyah and Sharmell researched
Stephen Curry.

2017 Augusta Park Primary School Teaching Staff

NEW HALL



Mr Whitaker
PE Teacher

RESOURCE CENTRE



4-1/16 Mrs Harris

Year 2/3



Mrs Elliot

Year 3/4



Mrs Densley



Scott Welfare
Literacy &
Numeracy coach

GUM NUT

CANTEEN
Amanda
Miklavac

4-18

Year 1/2

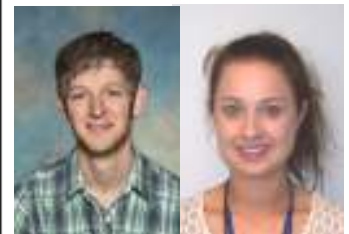


5-8 Mrs McKenzie

Years 2/3



Mrs Godfrey



Science Room
Liam Fawcett
Tegan Francis

Reception



Mrs Francis

Reception/1



Ms Kidman

Year 5/6

Sally Goldsworthy



5-10

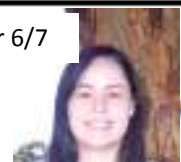
Years 4/5

Tessa Reid



10-1

Year 6/7



Ms Roy

Reception-2



Ms Dannenberg

Reception/1



Ms Murray



Ms Sghirripa
Year 4/5

5-15



Ms Miles
Year 3-7



Mrs Bhangu
Year 6/7

Wild Rosella Unit



Bec Mueller
Principal



Leah Kelly
Deputy Principal



Ben Kha
Counsellor



Kym Bishop
Student Support



Anne Kenny
AET



Hayley Carn